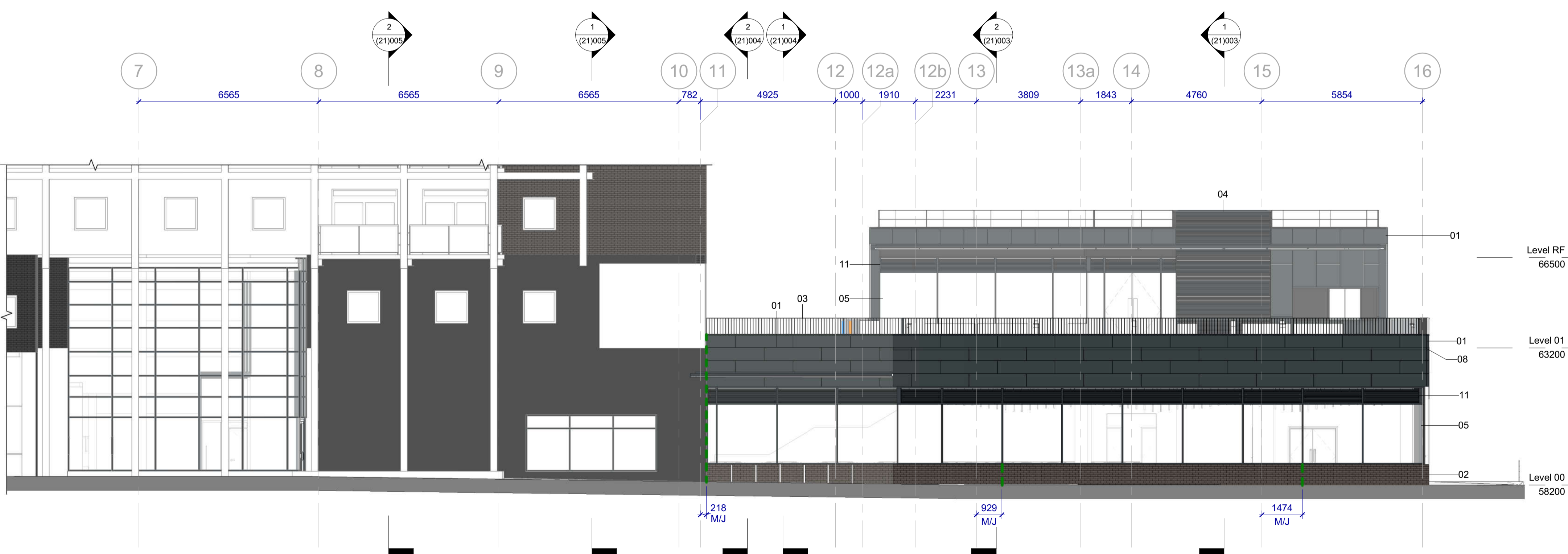


North Elevation  
1 : 100



South Elevation  
1 : 100

Figured dimensions to be followed in preference to those scaled from drawing.  
All dimensions to be verified on site by the contractors and such dimensions to be their responsibility.  
Drawing omissions and errors to be reported immediately to the architect.

Materials Key

- 01. Rainscreen panels - charcoal
- 02. Facing brickwork - black bricks with dark grey mortar
- 03. Painted metal balustrade - black
- 04. Colour coated metal louvre cladding system - black
- 05. Curtain wall glazing - frames to be colour coated dark grey.
- 06. Painted metal doors - dark grey
- 07. Canopy faced with colour coated metal - dark grey
- 08. Recessed detail in cladding
- 09. Internally illuminated signage
- 10. Glazed metal door to match curtain walling
- 11. Louvre system integrated into curtain walling - to colour match the framing system
- 12. Kitchen ventilation metal louvre - colour coated to match rainscreen panels
- 13. Painted metal balustrade - black

NOTES:

All materials used in external envelope construction need to comply with Regulation 7(4) for combustibility as defined in Ashton Fire Report section 6.1.

For new build elements the fire integrity of the primary structure needs to achieve 90 minutes (See section 3.1.3 of the Ashton Fire Report). This is independent of the room separation values given on the (29) series GA Plans.

--- Movement Joint - Refer to Structural Engineers drawings for further information.

For Grid Setting Out: refer to drawing (20)004

C1 03.09.21 Updated for construction IC

rev | date | description | drawn

Client:  
Willmott Dixon Construction Ltd.

project name:  
Phoenix Arts Centre  
Extension & Refurbishment

drawing name:  
Proposed GA North & South Elevation

20033 - MCA - 01 - ZZ - DR - A - (22)001 - C1  
scale (size): drawn / approved: date:  
1 : 100@A1 JvF AB OCT 20  
1:200@A3

project no: drawing no: revision:  
20033 (22)001 C1

drawing status:  
**CONSTRUCTION**